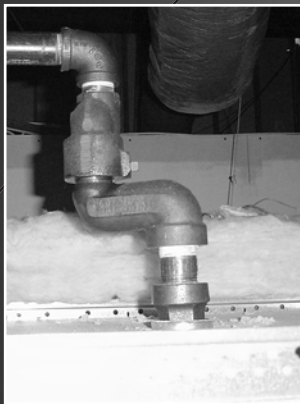


Center of Tile System Fittings



*Hitting The Center
Has Never Been
Easier, Faster or
More Economical*



AGF Manufacturing Inc.

100 Quaker Lane, Malvern, PA 19355
Telephone: 610/240/4900 • Fax: 610/240/4906
www.testandrain.com

Reliability, Versatility, Code Compatibility

Models 6000 and 6100 Swiveller Fittings

The AGF Swiveller fittings are designed to provide adjustability in the final piping connection between a water supply line and a wet system fire sprinkler head. This adjustability permits fast and easy placement of the sprinkler head exactly where it needs to go in any type or style of ceiling system or treatment including Drop, Slat, Cloud, Tin and many other innovative architectural designs.

- Obstructions and unique interior design requirements are easily maneuvered by using a combination of fittings (see examples on the following page).
- Easy to install, no extra hangers ceiling T-bar brackets or special tools are required.
- Does NOT depend on supported ceiling grid.
- Precise sprinkler head placement can be accomplished in half the normal time with reduction in material cost.
- Fittings can be easily readjusted after testing without draining the system.
- Fittings offer versatility in retrofit and/or tenant build out installations.
- Fittings are available in either plain end socket style or thread connections.
- All fittings are UL Listed and FM Approved.

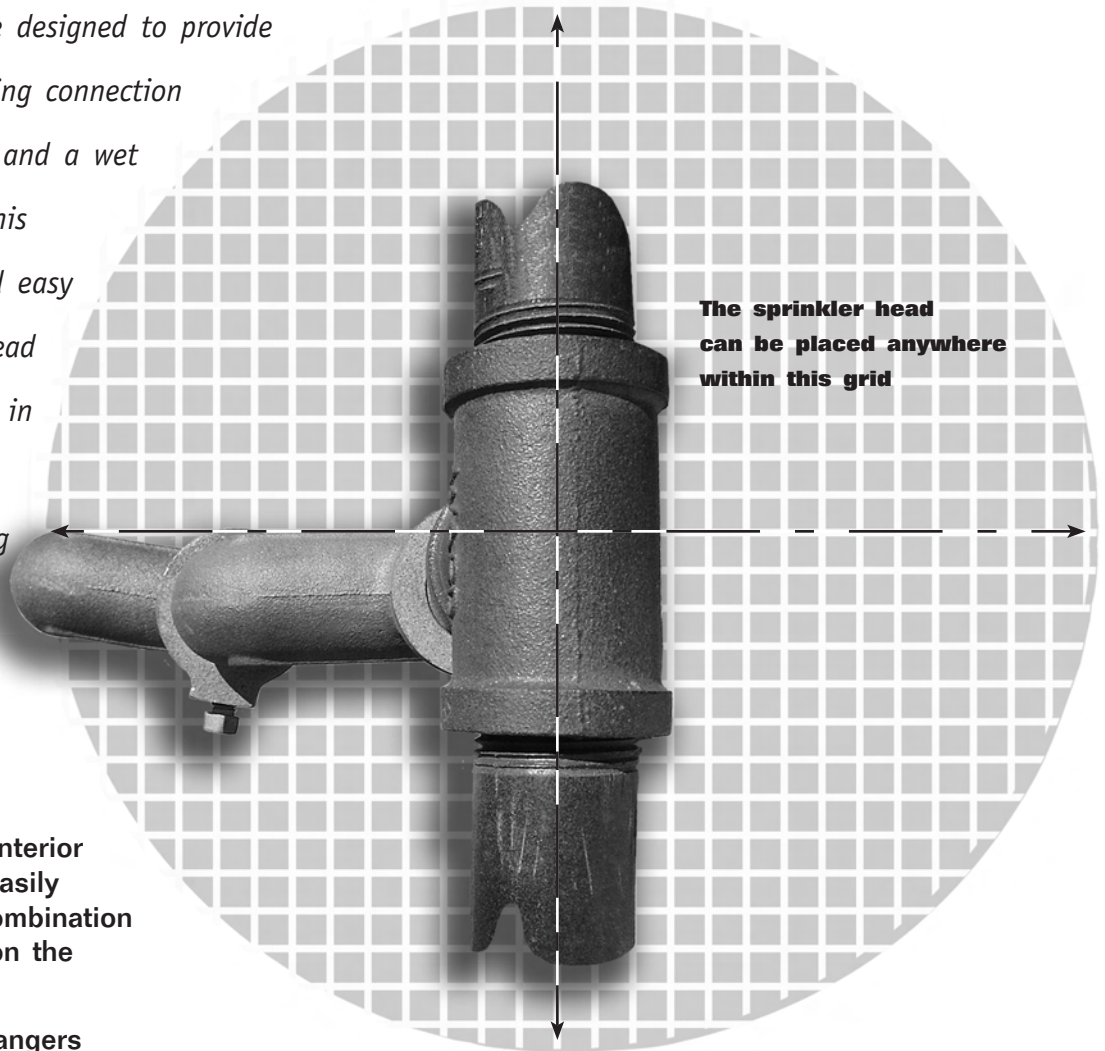
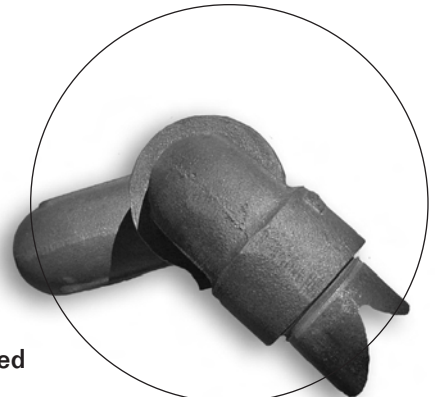


Illustration A

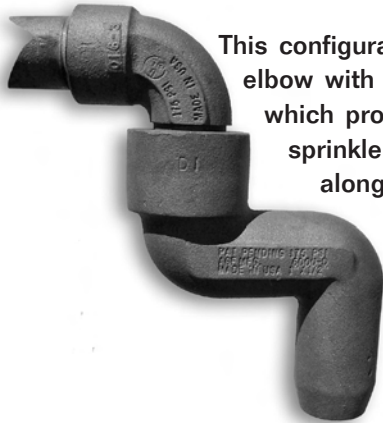
By rotating any combination of two 6000 series offset fittings to the desired position, the sprinkler head can be placed at any point within a 12" diameter from the center of the first fitting connection, as illustrated by the grid area.

Illustration B

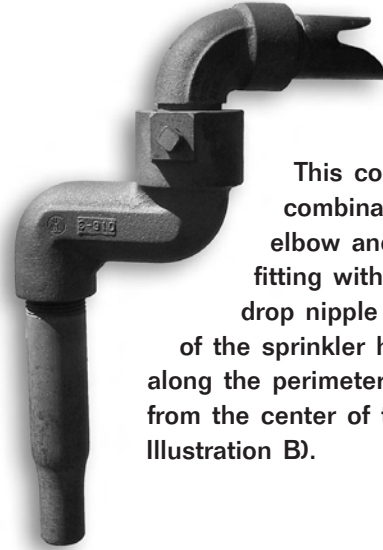
By rotating any one 6000 series offset fitting to the desired position, the sprinkler head can be placed at any point on the perimeter of a 6" diameter, as illustrated by the bold circle.



Examples of Typical Fitting Configurations



This configuration shows a 6100B elbow with a 6000D offset fitting which provides placement of the sprinkler head at any point along the perimeter of a 6" diameter from the center of the elbow (See Illustration B).

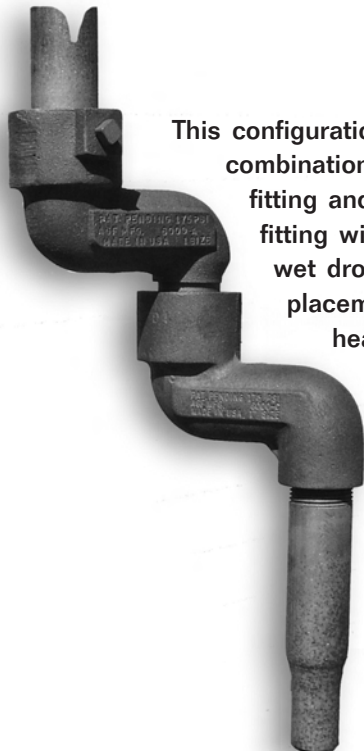


This configuration shows a combination of a 6100B elbow and a 6000C offset fitting with a reducing or wet drop nipple permitting placement of the sprinkler head at any point along the perimeter of a 6" diameter from the center of the elbow (See Illustration B).

This configuration shows a combination of a 6000B offset fitting and a 6000C offset fitting permitting placement of the sprinkler head at any point within a 12" diameter from the center of the first fitting connection (See Illustration A).



This shows our 6000F offset fitting which is designed to permit placement of the sprinkler head at any point along the perimeter of a 6" diameter from the center of the fitting connection. Integral reducing outlet reduces material cost, installation time and leakage points (See Illustration B).



This configuration shows a combination of a 6000A offset fitting and a 6000C offset fitting with a reducing or wet drop nipple permitting placement of the sprinkler head at any point within a 12" diameter from the center of the first fitting connection. This configuration is excellent for going around any number of obstacles (See Illustration A).



This configuration shows a combination of two elbows with a 6000F offset fitting which is ideal for over and under pipe installations, as well as, going over, under and around obstacles. This configuration permits placement of the sprinkler head at any point along the perimeter of a 6" diameter from the center of the second elbow in a 180° arc extending from the supply piping (See Illustration B).

Technical Specifications

<p>6000B</p> <p>Equivalent to: (2) 90° Elbows (2) 2" Nipples</p> <p>\$5.08 ea.</p>	<p>6100B</p> <p>Equivalent to: (1) 90° Elbow (1) 2" Nipple</p> <p>\$2.54 ea.</p>
<p>6000D</p> <p>Equivalent to: (2) 90° Elbows (2) 2" Nipples (1) Reducer</p> <p>DESIGNED WITH INTEGRAL 1" x 1/2" CONC. REDUCER</p> <p>\$7.28 ea.</p>	<p>6000C</p> <p>Equivalent to: (2) 90° Elbows (1) 2" Nipple</p> <p>DESIGNED FOR USE WITH WET DROP NIPPLE</p> <p>\$4.13 ea.</p>
<p>6000F</p> <p>Equivalent to: (2) 90° Elbows (2) 2" Nipples (1) Reducer</p> <p>DESIGNED WITH INTEGRAL 1" x 1/2" CONC. REDUCER</p> <p>\$7.28 ea.</p>	<p>6000E</p> <p>Equivalent to: (2) 90° Elbows (1) 2" Nipple</p> <p>DESIGNED FOR USE WITH WET DROP NIPPLE</p> <p>\$4.13 ea.</p>



AGF Manufacturing Inc.
100 Quaker Lane, Malvern, PA 19355
Telephone: 610/240/4900
Fax: 610/240/4906

Reliability, Versatility, Code Compatibility



MADE IN USA



VISIT US ON THE INTERNET

www.testandrain.com