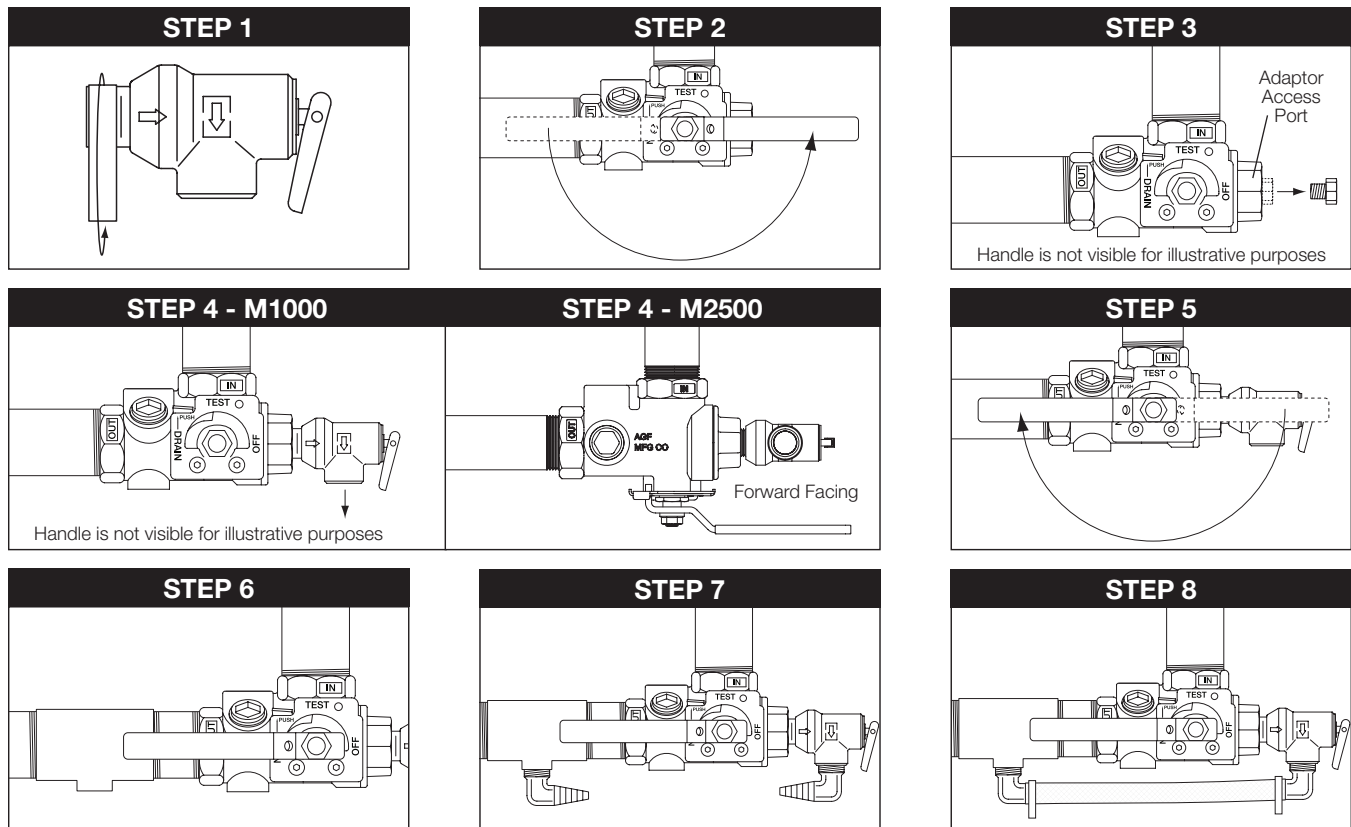


M1000/M2500 Pressure Relief Valve Installation

Please read complete instructions to familiarize yourself with the procedure before performing any repairs.

Installing a Pressure Relief Valve on the TEST_{AND}DRAIN M1000/M2500



1. Prepare the Pressure Relief Valve by wrapping the threads with PTFE tape or applying thread sealant.
2. Isolate the TEST_{AND}DRAIN[®] Adaptor Access Port from the system by turning the handle to the "DRAIN" position.
3. Remove the 1/2" plug from the TEST_{AND}DRAIN[®] Adaptor Access Port.
4. Immediately install the pressure relief valve into the adaptor access port. With a wrench, thread the pressure relief valve until it is leak tight and the valve outlet is pointing in a direction that will not interfere with the handle of the TEST_{AND}DRAIN[®].
5. With the pressure relief valve installed, return the TEST_{AND}DRAIN[®] valve handle to the "OFF" position.
6. Downstream of the TEST_{AND}DRAIN[®] valve plumb in a drain line size x 1/2" inline or mechanical tee fitting into the outlet pipe.
7. Prepare the barbed elbows by wrapping the threads with PTFE tape or applying thread sealant. Then, using a wrench, thread one barbed elbow into the pressure relief valve's outlet and the other barbed elbow into the inline or mechanical tee's 1/2" NPT outlet.
8. Slide the hose clamps onto the bypass tube then insert each end of the bypass tube onto each elbow barb. Place the hose clamps over each end of the bypass tube and squeeze to tighten.



AGF Manufacturing Inc.
100 Quaker Lane, Malvern, PA 19355
Phone: 610-240-4900
Fax: 610-240-4906
www.agfmanufacturing.com

Questions?

Call AGF at 610-240-4900 and
we'll be happy to assist you.