



4" Groove Model 8000 and 2" Groove  
Model 8011 COMMERCIAL RISERPACK®s



## SIMPLIFY YOUR INSTALL WITH AGF'S RISERPACK®

### THE FLOOR CONTROL PRE-ASSEMBLED TO YOUR SPECIFICATIONS

AGF Manufacturing's RESIDENTIAL and COMMERCIAL RISERPACK®s offer the ultimate in convenience and versatility. The Model 8000 RISERPACK® is a floor control assembly that includes a pressure gauge, water flow alarm switch, and inspector's test and drain valve. It can also be ordered with a pressure relief valve as the Model 8011. RISERPACK® is available for both residential (NFPA 13D/13R) and commercial (NFPA 13) wet fire sprinkler systems and can be assembled by AGF with additional features to meet your specifications.

- Save Money — Cut the cost of buying and assembling the individual parts of a floor control assembly; RISERPACK® includes all the parts you need
- Save Time — Pre-assembled RISERPACK® can be installed in a fraction of the time it takes to build a traditional floor control assembly with a separate inspector's test and drain valve
- Save Space — With RISERPACK®s compact body, you can reduce the space used by sectional floor control assemblies by up to 75%
- RISERPACK®, with the AGF TESTANDRAIN® valve, is available in more sizes and with more connection options than other competitive products
- All RISERPACK®s utilize an NFPA required FM Approved/UL Listed test orifice available in a full range of sizes
- Can be installed vertically or horizontally and operated from the left or right side to accommodate all your installation needs — AGF will build your RISERPACK® according to your specifications
- Model 8011 includes pressure relief valve rated at 175 PSI with 165, 185, 195, 205, 225, and 250 PSI ratings also available
- From AGF Manufacturing, maker of the TESTANDRAIN® valve, the industry standard for inspector's test and drain valves



2" Thread x  
Groove Model  
8000 RESIDENTIAL  
RISERPACK®

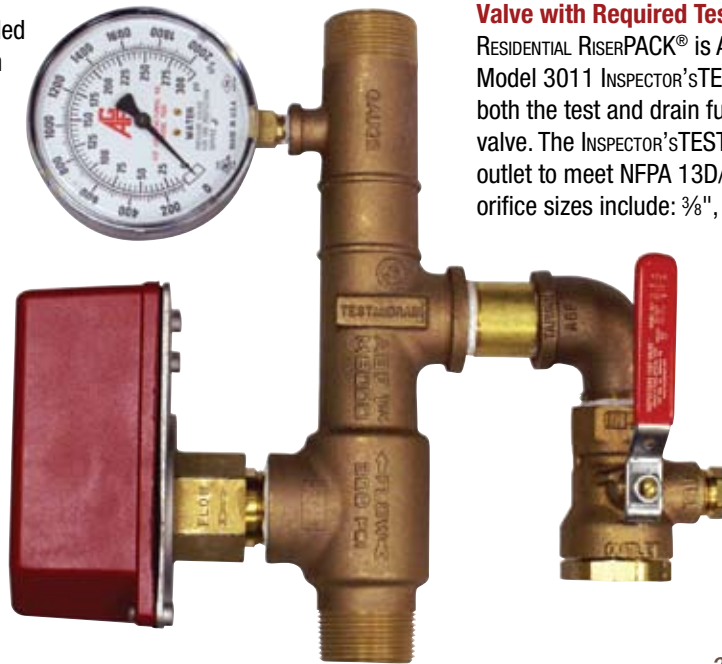
# ANATOMY OF THE RESIDENTIAL RISERPACK®

Pre-Assembled TEST<sub>AND</sub>DRAIN® Riser for NFPA 13D/13R Wet Fire Sprinkler Systems

**Pressure Gauge:** AGF's FM Approved/UL Listed Model 7500 is a 3½" pressure gauge with ¼" threaded connection designed for use on fire sprinkler systems.

**Made in the USA:** The Model 3011 INSPECTOR'S TEST®, Model 7500 Pressure Gauge, and all riser manifolds are made in the U.S.A. All RESIDENTIAL RISERPACK®s are assembled in the U.S.A.

**Water Flow Alarm Switch:** RESIDENTIAL RISERPACK®s utilize a standard water flow alarm switch with a 1" threaded connection.



1¼" Threaded Model 8000

**Valve with Required Test Orifice:** The heart of a RESIDENTIAL RISERPACK® is AGF's FM Approved/UL Listed Model 3011 INSPECTOR'S TEST® ball valve which provides both the test and drain function in a single compact valve. The INSPECTOR'S TEST® valve features an orifice outlet to meet NFPA 13D/13R requirements. Available orifice sizes include: 3/8", 7/16", 1/2", 17/32", 5/8" (ELO). The Model 3011 is rated at 300 PSI and features a 1" Female NPT connection.



INSPECTOR'S TEST® Valves: Model 3011A with pressure relief valve (left) and Model 3011BV (right)

**Riser Manifold:** The core of a RESIDENTIAL RISERPACK® is a UL Listed cast bronze riser manifold designed to fit in most standard stud wall framing. The riser provides all required signage for flow direction, test and drain outlet, and pressure gauge location; with lettering appearing on both sides allowing for right or left installation. The risers are available in 8 different size/connection combinations: 1", 1¼", 1½", and 2" Male NPT; 1½" and 2" Groove; and 1½" and 2" Male NPT x Groove.

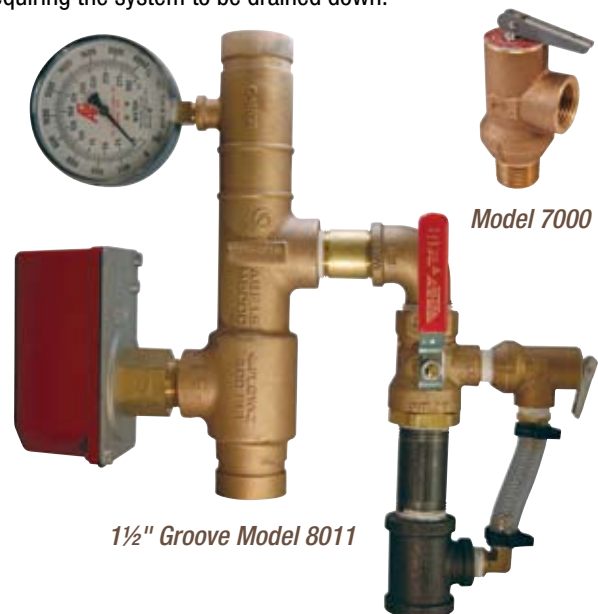
**Model 8011 with Pressure Relief Valve:** The RESIDENTIAL RISERPACK® is available for systems requiring pressure relief as the Model 8011 with AGF's FM Approved/UL Listed Model 7000 Pressure Relief Valve. The Model 7000 is specifically designed for "wet" fire sprinkler systems and is rated at 175 PSI with 165, 185, 195, 205, 225, and 250 PSI ratings also available. The Model 8011 includes the pressure relief valve, bypass piping, and all necessary fittings. The pressure relief valve is designed to be easily installed after pressure testing the system without requiring the system to be drained down.



1" Threaded Model 8000

1" Threaded Model 8011

**1" Sizes:** To meet the compact needs of a smaller system, 1" RESIDENTIAL RISERPACK®s differ slightly from the larger sizes. The Model 8000 utilizes a ¾" ball valve with a patented TEST<sub>AND</sub>DRAIN® orifice outlet designed to accept either a standard garden hose or hard piped drain line. The Model 8011 utilizes AGF's FM Approved/UL Listed Model 7200 Pressure Relief Valve which provides relief, test, and drain function in a single valve. The Model 7200 is rated at 175 PSI and features a ¾" NPT connection.



1½" Groove Model 8011

Model 7000

# ANATOMY OF THE COMMERCIAL RISERPACK®

Pre-Assembled TEST<sub>AND</sub>DRAIN® Riser for NFPA 13 Wet Fire Sprinkler Systems

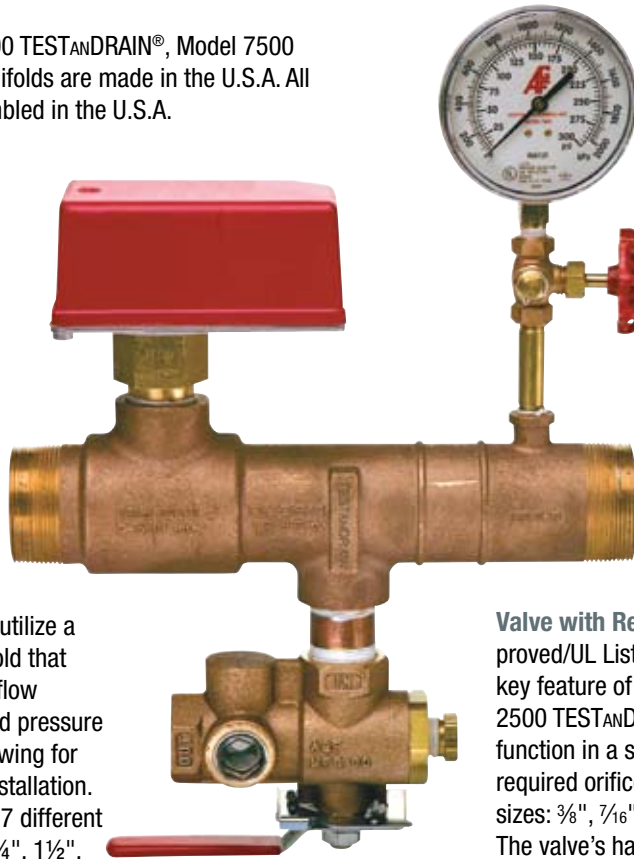
**Made in the USA:** The Model 2500 TEST<sub>AND</sub>DRAIN®, Model 7500 Pressure Gauge, and all riser manifolds are made in the U.S.A. All COMMERCIAL RISERPACK®s are assembled in the U.S.A.

## Water Flow Alarm Switch:

COMMERCIAL RISERPACK®s utilize a standard water flow alarm switch attached through either a 1" threaded connection (1¼" – 2" sized risers) or a saddle mount (2½" – 6" sized risers).

**Riser Manifold:** COMMERCIAL RISERPACK®s are available in 11 different size/connection combinations to accommodate a range of installation needs.

1¼" – 2" COMMERCIAL RISERPACK®s utilize a UL Listed cast bronze riser manifold that provides all required lettering for flow direction, test and drain outlet, and pressure gauge location on both sides, allowing for right, left, horizontal, or vertical installation. The bronze risers are available in 7 different size/connection combinations: 1¼", 1½", and 2" Male NPT; 1½" and 2" Groove; and 1½" and 2" Male NPT x Groove. 2½", 3", 4", and 6" COMMERCIAL RISERPACK®s utilize a domestically made schedule 40 fabricated steel riser with a 3 mil red powdercoated steel riser with a Groove connection. All risers are rated at 300 PSI.



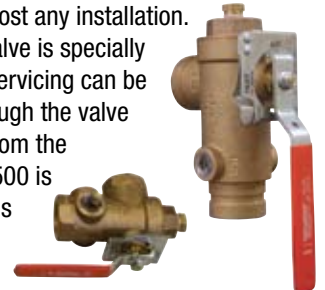
2" Threaded Model 8000

**Pressure Gauge:** AGF's Model 7500 is an FM Approved/UL Listed 3½" pressure gauge with a ¼" threaded connection designed for use on fire sprinkler systems.

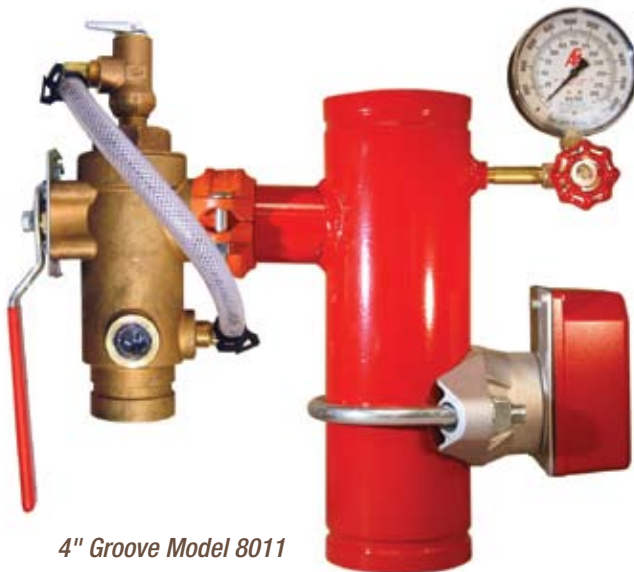
**Globe Valve:** AGF's FM Approved/UL Listed Model 7600 Globe Valve features three ¼" threaded connections allowing for a straight or perpendicular connection of the pressure gauge to the riser.



**Valve with Required Test Orifice:** AGF's FM Approved/UL Listed Model 2500 TEST<sub>AND</sub>DRAIN® is the key feature of a COMMERCIAL RISERPACK®. The Model 2500 TEST<sub>AND</sub>DRAIN® combines the test and drain function in a single ball valve and features an NFPA required orifice outlet available in a full range of sizes: 3/8", 7/16", 1/2", 17/32", 5/8" (ELO), 3/4" (ESFR), K25. The valve's handle location allows for easy access from both the right and left side providing easy operation in almost any installation. The TEST<sub>AND</sub>DRAIN® valve is specially designed so that all servicing can be easily performed through the valve without removing it from the system. The Model 2500 is rated at 300 PSI and is available 1" Female NPT, 1¼" Female NPT, or 2" Groove connection.



1¼" Threaded & 2" Groove Model 2500 TEST<sub>AND</sub>DRAIN®



4" Groove Model 8011

**Model 8011 with Pressure Relief Valve:** The COMMERCIAL RISERPACK® is available for systems requiring pressure relief as the Model 8011 with AGF's UL Listed/FM Approved Model 7000 Pressure Relief Valve. The Model 7000 is designed specifically for "wet" fire sprinkler systems and is rated at 175 PSI with 165, 185, 195, 205, 225, and 250 PSI ratings also available. The Model 8011 includes the pressure relief valve, bypass piping, and all necessary fittings. Due to the special design of the TEST<sub>AND</sub>DRAIN® valve, the pressure relief valve can be easily installed and serviced without draining down the system.



Model 7000

## AGF Manufacturing's Model 8000/8011 RISERPACK®s at a Glance

	Size	Available Connections	Riser Manifold Material	Available Orifices	Valve	Pressure Gauge	Pressure Relief Valve Kit Option (Model 8011)
<b>RESIDENTIAL RISERPACK®</b>	1"	Male NPT	Cast Bronze	3.0K, 3.7K, 4.3K, 5.5K	¾" Ball Valve with TESTANDRAIN® Orifice	Model 7500 Pressure Gauge	¾" Model 7200 Pressure Relief Valve with Test and Drain Function; Rated at 175 PSI
	1¼"	Male NPT	Cast Bronze	⅜", 7/16", ½", 17/32", 5/8" (ELO) [K Factors: 2.8 – 11.2]	1" Model 3011 INSPECTOR'S TEST®	Model 7500 Pressure Gauge	½" Model 7000 Pressure Relief Valve; Rated at 175 PSI with Other Ratings Available; Includes Bypass Piping and All Necessary Fittings
	1½"	Male NPT, Groove, MNPT x Groove	Cast Bronze	⅜", 7/16", ½", 17/32", 5/8" (ELO) [K Factors: 2.8 – 11.2]	1" Model 3011 INSPECTOR'S TEST®	Model 7500 Pressure Gauge	½" Model 7000 Pressure Relief Valve; Rated at 175 PSI with Other Ratings Available; Includes Bypass Piping and All Necessary Fittings
	2"	Male NPT, Groove, MNPT x Groove	Cast Bronze	⅜", 7/16", ½", 17/32", 5/8" (ELO) [K Factors: 2.8 – 11.2]	1" Model 3011 INSPECTOR'S TEST®	Model 7500 Pressure Gauge	½" Model 7000 Pressure Relief Valve; Rated at 175 PSI with Other Ratings Available; Includes Bypass Piping and All Necessary Fittings
<b>COMMERCIAL RISERPACK®</b>	1¼"	Male NPT	Cast Bronze	⅜", 7/16", ½", 17/32", 5/8" (ELO) [K Factors: 2.8 – 11.2]	1" Model 2500 TESTANDRAIN®	Model 7500 Pressure Gauge with Model 7600 ¼" 3-Way Globe Valve	½" Model 7000 Pressure Relief Valve; Rated at 175 PSI with Other Ratings Available; Includes Bypass Piping and All Necessary Fittings
	1½"	Male NPT, Groove, MNPT x Groove	Cast Bronze	⅜", 7/16", ½", 17/32", 5/8" (ELO) [K Factors: 2.8 – 11.2]	1" Model 2500 TESTANDRAIN®	Model 7500 Pressure Gauge with Model 7600 ¼" 3-Way Globe Valve	½" Model 7000 Pressure Relief Valve; Rated at 175 PSI with Other Ratings Available; Includes Bypass Piping and All Necessary Fittings
	2"	Male NPT, Groove, MNPT x Groove	Cast Bronze	⅜", 7/16", ½", 17/32", 5/8" (ELO) [K Factors: 2.8 – 11.2]	1" Model 2500 TESTANDRAIN®	Model 7500 Pressure Gauge with Model 7600 ¼" 3-Way Globe Valve	½" Model 7000 Pressure Relief Valve; Rated at 175 PSI with Other Ratings Available; Includes Bypass Piping and All Necessary Fittings
	2½"	Groove	Sch. 40 Fabricated Steel with Red Powdercoated Finish	⅜", 7/16", ½", 17/32", 5/8" (ELO), ¾" (ESFR) [K Factors: 2.8 – 14.0]	1¼" Model 2500 TESTANDRAIN®	Model 7500 Pressure Gauge with Model 7600 ¼" 3-Way Globe Valve	½" Model 7000 Pressure Relief Valve; Rated at 175 PSI with Other Ratings Available; Includes Bypass Piping and All Necessary Fittings
	3"	Groove	Sch. 40 Fabricated Steel with Red Powdercoated Finish	⅜", 7/16", ½", 17/32", 5/8" (ELO), ¾" (ESFR) [K Factors: 2.8 – 14.0]	1¼" Model 2500 TESTANDRAIN®	Model 7500 Pressure Gauge with Model 7600 ¼" 3-Way Globe Valve	½" Model 7000 Pressure Relief Valve; Rated at 175 PSI with Other Ratings Available; Includes Bypass Piping and All Necessary Fittings
	4"	Groove	Sch. 40 Fabricated Steel with Red Powdercoated Finish	⅜", 7/16", ½", 17/32", 5/8" (ELO), ¾" (ESFR), K25 [K Factors: 2.8 – 25.0]	2" Model 2500 TESTANDRAIN®	Model 7500 Pressure Gauge with Model 7600 ¼" 3-Way Globe Valve	½" Model 7000 Pressure Relief Valve; Rated at 175 PSI with Other Ratings Available; Includes Bypass Piping and All Necessary Fittings
	6"	Groove	Sch. 40 Fabricated Steel with Red Powdercoated Finish	⅜", 7/16", ½", 17/32", 5/8" (ELO), ¾" (ESFR), K25 [K Factors: 2.8 – 25.0]	2" Model 2500 TESTANDRAIN®	Model 7500 Pressure Gauge with Model 7600 ¼" 3-Way Globe Valve	½" Model 7000 Pressure Relief Valve; Rated at 175 PSI with Other Ratings Available; Includes Bypass Piping and All Necessary Fittings

**AGF Manufacturing Inc. • Phone: 610-240-4900 • Fax: 610-240-4906 • [www.testandrain.com](http://www.testandrain.com)**